

Elegie

Wilhelm Gromes

~ 80

5 *sfz* *ff* *ff*

9 *pp*

11

15 *sul pont.*

19

23

27 *flageolet* *ord.*

33

37 *f*

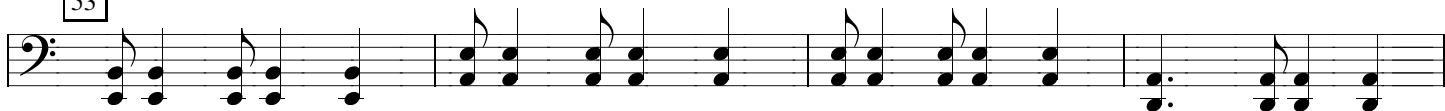
41 *cresc.*

45 *ff*

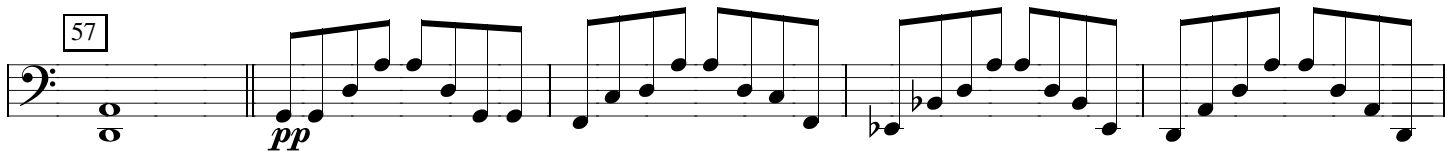
49

Detailed description: This page of a musical score for Cello 2, titled 'Elegie' by Wilhelm Gromes, contains measures 5 through 49. The music is written in bass clef with a 4/4 time signature. It begins with a dynamic of *sfz* and features several *ff* passages. A triplet of eighth notes is marked *ff* at measure 7. From measure 9, the piece enters a section of rapid sixteenth-note patterns, starting with a *pp* dynamic. This section continues through measures 11, 15, 19, and 23. At measure 27, the instruction 'flageolet' is given, and the music transitions to a series of sustained chords. At measure 33, the dynamic changes to *f*. The piece concludes with a *cresc.* marking at measure 41 and a final *ff* dynamic at measure 45.

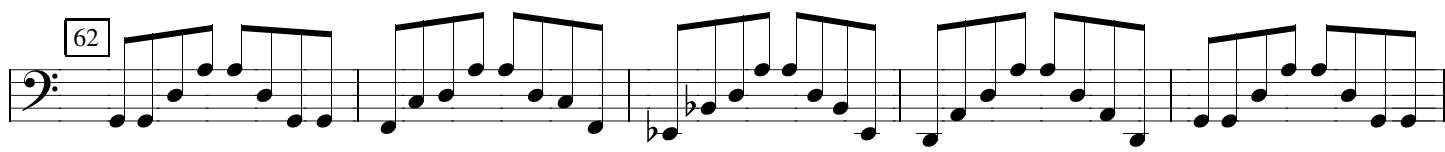
53



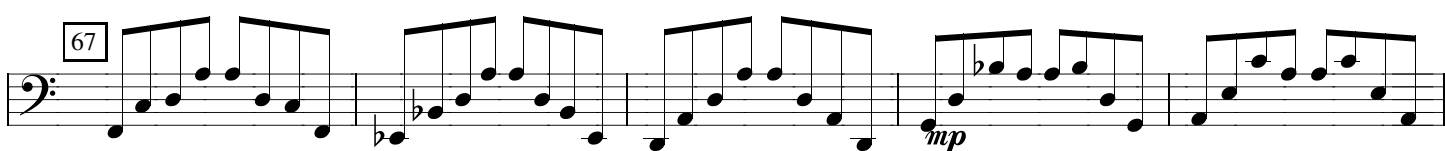
57



62



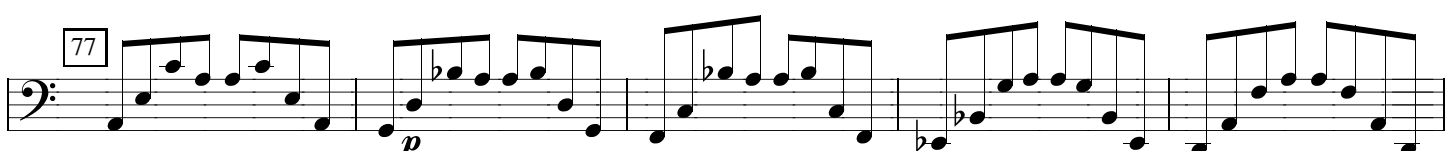
67



72



77



82



87



89



92



94



96



98



100

102

104

106

mf

108

110

mp

115

120

125

130

135

dim.

pizz.

139

142